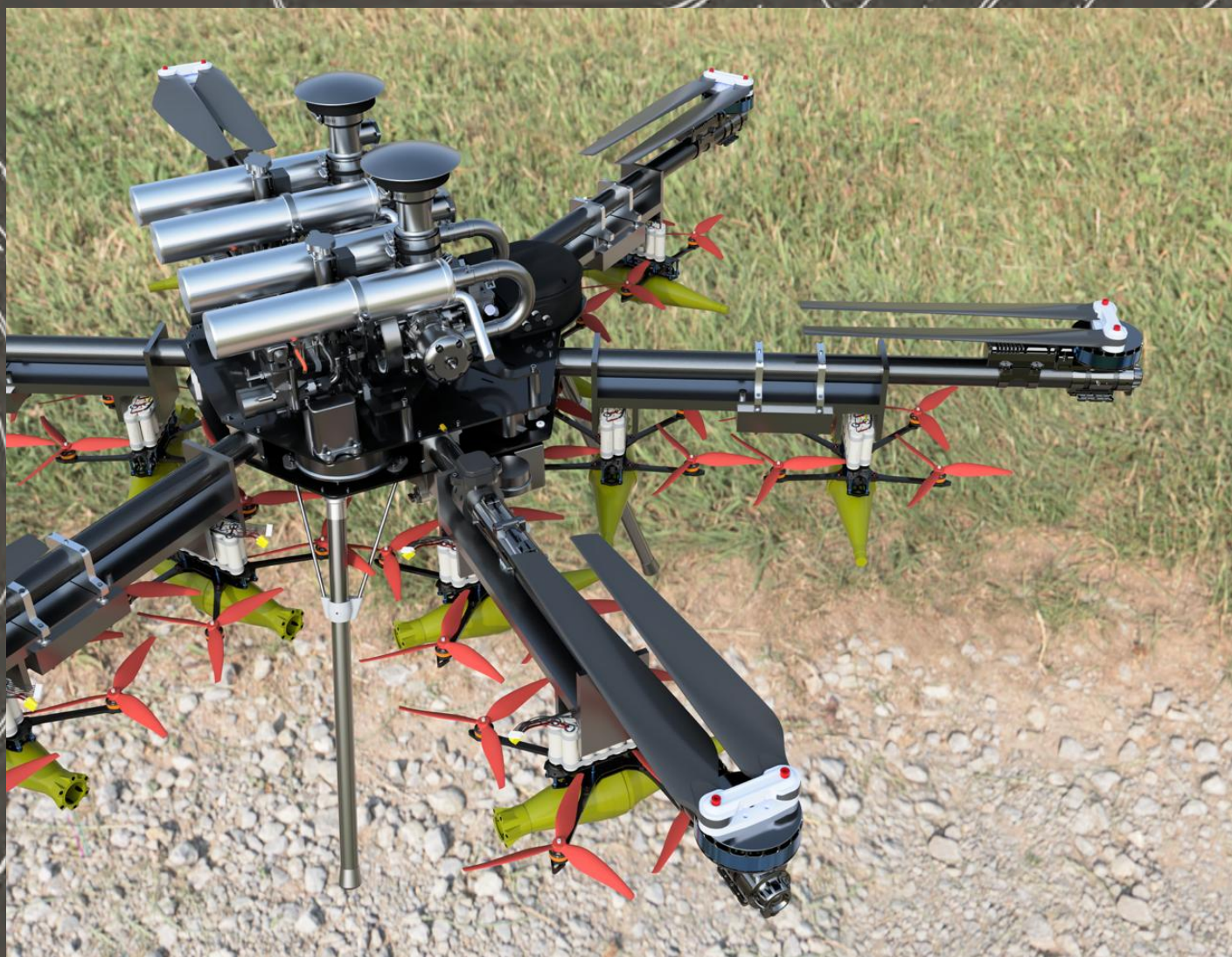


ADLER AEROSPACE



ATLAS-6 "Storm"

12-FPV Kamikaze Mothership





The **Atlas6** is a state-of-the-art heavy lift hybrid multirotor aircraft designed for demanding aerial applications. Equipped with two generators and 6 motors, the **Atlas6** ensures robust performance and operational redundancy. Capable of lifting 50kg for 30 minutes or 25kg for 3 hours, this versatile aircraft is suitable for a wide range of applications.



GENERAL FEATURES

- ◇ Robust carbon fibre frame
- ◇ Payload agnostic
- ◇ 50kg maximum payload
- ◇ Multiple radio options
- ◇ Rain and weather resistant
- ◇ Dual RTK GNSS
- ◇ Multi operator set up





ATLAS6 DIMENSIONS

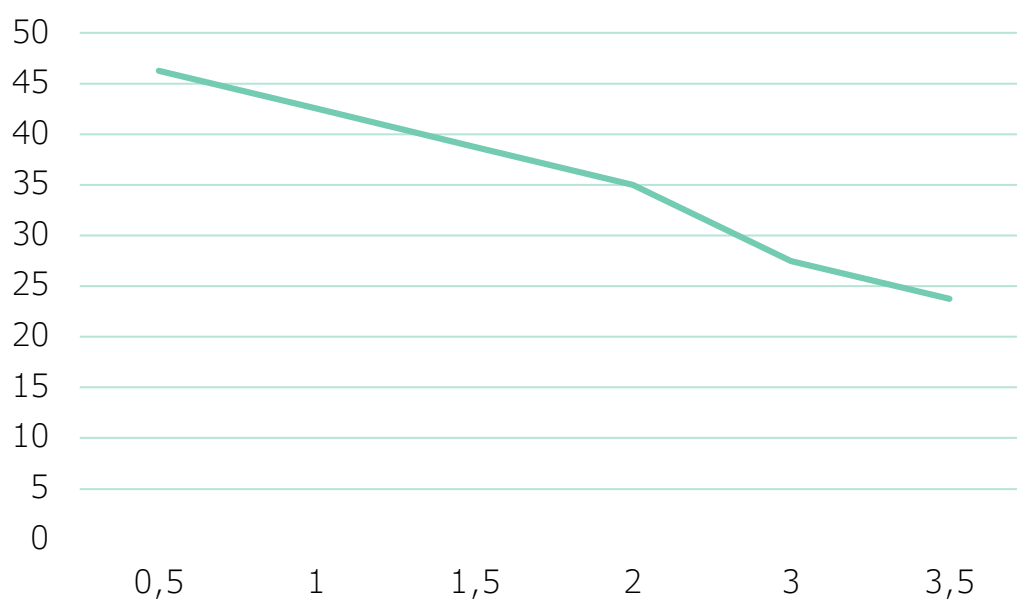
Width (mm)	2400
Diagonal (mm)	2400
Height of landing gear (mm)	300

WEIGHTS

Maximum Take off weight (kg)	104
Gross Payload (Kg)	50
Fuel Tank (L)	32
Maximum fuel (kg)	25

FLIGHT PERFORMANCE*

Net Payload (kg) vs Flight Time (hrs)



*provided as an estimate based on testing and a consumption of 7.5 litres per hour



ATLAS-6 SYSTEM

Motors	6
Voltage (V)	48
Number of generators	2
Generator Continuous Power (W)	14000
Generator Time between overhauls (hours)	200
Battery capacity (Ah)	10
Battery only flight time at maximum payload (mins)	2

PAYLOADS

Payload Power (W)	1500
Connector	Amass XT90
Payload fixing attachment	Custom

FLIGHT CHARACTERISTICS

Maximum speed (m/s - km/h - knts)	20 - 72 - 38
Operating temperature (degrees C)	+40 to -20
Maximum wind speed (m/s)	15



ATLAS-6

Variants:

- "Storm" FPV Mothership
- "Lift" Transport
- "Shield" RF Jammer
- "Commander" Relay

